

FILTREX





Certified Quality:



ISO 9001 - PED



AD-HP0



U-STAMP



NATIONAL BOARD



NATO AQAP-110



U.S. NAVY

Designing and manufacturing filters since 1976

FILTERING SYSTEMS FOR INDUSTRIAL, OIL & GAS, MARINE AND DIESEL ENGINE APPLICATIONS

With more than thirty years of experience in the micronic filtration of lube oil, fuel oil, hydrocarbon and water, FILTREX is one of the world's leaders, as a direct result of our considerable commitment to research, design and resource optimization. The adoption of multipallet CNC equipment and of a centralized warehouse for components has provided a substantial reduction in costs while maintaining very high quality standards certified by the main international boards. The manufacturing complex is conveniently located close to Milan airport and consists of 4 units equipped with state-of-the-art automatic machines. The new Headquarters tower in Milan provides adequate office space. Extensive testing of filters is performed by equipment specifically designed to simulate real operating conditions. Prompt service, innovative design, exceptional reliability and efficiency are some of the features most valued by a constantly increasing number of industrial, petrochemical, off-shore, marine and military users.



Manufacturing Unit 4



Manufacturing Unit 1



FILTREX USA



Headquarters



The FILTREX Industrial Park at Vignate (ITALY)



**DESIGN, RESEARCH,
DEVELOPMENT AND EVALUATION**

Constant commitment to these activities is the essence of the quality, performance and safety of all FILTREX products.



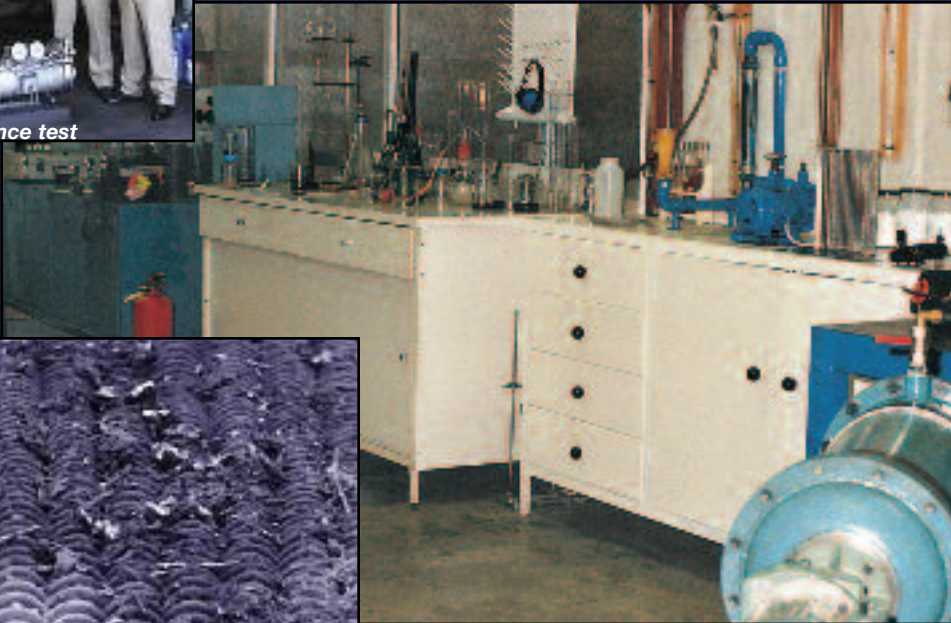
Water test rig, 4,200 m³/h (18,500 GPM)



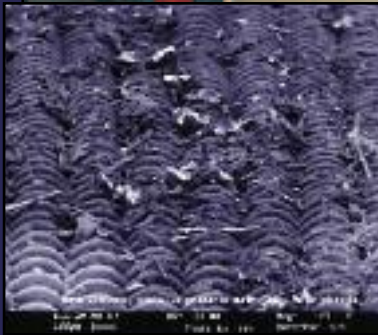
Test rig for lube oil and heavy fuel oil, 300 m³/h (1,320 GPM).



US NAVY acceptance test



Laboratory
Chemical and physical
analysis of fluids
and contaminants.



Test rig
for heavy fuel oil
30 m³/h
(132 GPM).



MANUFACTURING

Automation and strict management of resources has led to a reduction in manufacturing costs producing a continuous search for innovation.





THE COMPLETE FILTRATION SOLUTION



AUTOMATIC FILTERS

STATIC FILTERS

APPLICATIONS

OPERATING DATA

		MICRONIC					LAMELLAR	SKID MOUNTED		MULTI-BASKET	DEBRIS	DUPLEX	SIMPLEX
		ACX	DACX	ACP	DACP	DACXT	A	ACR	ACW	AC	SACIL	DX	SX
MERCHANT NAVY	LUBE OIL												
	FUEL OIL												
	WATER												
MILITARY NAVY	LUBE OIL												
	FUEL OIL												
	WATER												
POWER GENERATION	LUBE OIL												
	FUEL OIL												
	GAS												
	WATER												
RAILWAY	LUBE OIL												
	FUEL OIL												
OIL AND GAS	PROCESS LIQUIDS												
	GAS												
	LUBE OIL												
	WATER												
REFINERY AND PETROCHEMICAL	PROCESS LIQUIDS												
	GAS												
	LUBE OIL												
	WATER												
CHEMICAL	AGGRESSIVE FLUIDS												
	GAS												
	WATER												
DESALINATION	WATER												
ENVIRONMENT PROTECTION	WATER												

OPERATION	continuous	continuous	continuous	continuous	continuous	continuous	continuous	continuous	continuous	continuous	continuous	continuous	discontinuous
CLEANING FLUID	same fluid	same fluid	same fluid	same fluid	same fluid	same fluid	none	same fluid or external fluid	same fluid or external fluid	same fluid	same fluid	none	none
CLEANING SYSTEM	backwash	backwash	backwash	backwash	backwash	backwash	mechanical	backwash	backwash	backwash	backwash	manual	manual
USE of CLEANING FLUID	intermittent (on condition)	intermittent (on condition)	continuous	continuous	intermittent (on condition)	intermittent (on condition)	none	intermittent (on condition)	intermittent (on condition)	intermittent (on condition)	intermittent (on condition)	none	none
CLEANING FLUID REGENERATION SYSTEM ⁽¹⁾	sludge recovery manual cleaning	sludge recovery manual cleaning	sludge recovery manual cleaning or centrifugal oil cleaner	sludge recovery manual cleaning or centrifugal oil cleaner	sludge recovery manual cleaning	sludge recovery manual cleaning	none	none	none	none	none	none	none
ENERGY SUPPLY	electric pneumatic	electric pneumatic	self supplied or electric	self supplied or electric	electric pneumatic	electric or none	electric or none	electric pneumatic	electric pneumatic	electric pneumatic	electric pneumatic	none	none
MINIMUM FILTRATION DEGREE $\mu\text{m abs}$	10	10	10	10	10	76	76	4	4	40	1000	10	0,3
CONNECTIONS SIZE DN ⁽²⁾	40 ÷ 400	40 ÷ 400	40 ÷ 400	40 ÷ 400	32 ÷ 150	100 ÷ 600	100 ÷ 600	100 ÷ 400	50 ÷ 1.200	300 ÷ 3.000	15 ÷ 600	15 ÷ 600	15 ÷ 1.500
	1½" ÷ 16"	1½" ÷ 16"	1½" ÷ 16"	1½" ÷ 16"	1¼" ÷ 6"	½" ÷ 24"	½" ÷ 24"	4" ÷ 16"	2" ÷ 48"	12" ÷ 120"	½" ÷ 24"	½" ÷ 24"	½" ÷ 60"
OPERATING PRESSURE ⁽²⁾	2 ÷ 16	2 ÷ 16	2 ÷ 16	2 ÷ 16	2 ÷ 16	2 ÷ 16	0 ÷ 580	0 ÷ 25	0 ÷ 25	2 ÷ 16	0,4 ÷ 16	0 ÷ 40	0 ÷ 100
	29 ÷ 232	29 ÷ 232	29 ÷ 232	29 ÷ 232	29 ÷ 232	29 ÷ 232	0 ÷ 362	0 ÷ 362	0 ÷ 362	29 ÷ 362	6 ÷ 232	0 ÷ 580	0 ÷ 1.450
FILTER BODY MATERIAL ⁽²⁾	ductile cast iron GGG-40	ductile cast iron GGG-40	ductile cast iron GGG-40	ductile cast iron GGG-40	ductile cast iron GGG-40	ductile cast iron GGG-40	aluminium - carbon steel	carbon steel - alloy steel	carbon steel - alloy steel	rubber lined carbon steel	rubber lined carbon steel	carb. steel - ductile cast iron GGG-40	carb. steel - ductile cast iron GGG-40
FILTERING ELEMENT MATERIAL ⁽²⁾	AISI 316L	AISI 316L	AISI 316L	AISI 316L	AISI 316L	AISI 316L	wear and corrosion resistant steel	AISI 316L	AISI 316L	AISI 316L	AISI 316L	AISI 316L	AISI 316L
DATA SHEET No.	TD-01	TD-03	TD-05	TD-08	TD-32	TD-15	TD-15	TD-16	TD-18	TD-21	TD-22	TD-23	TD-24

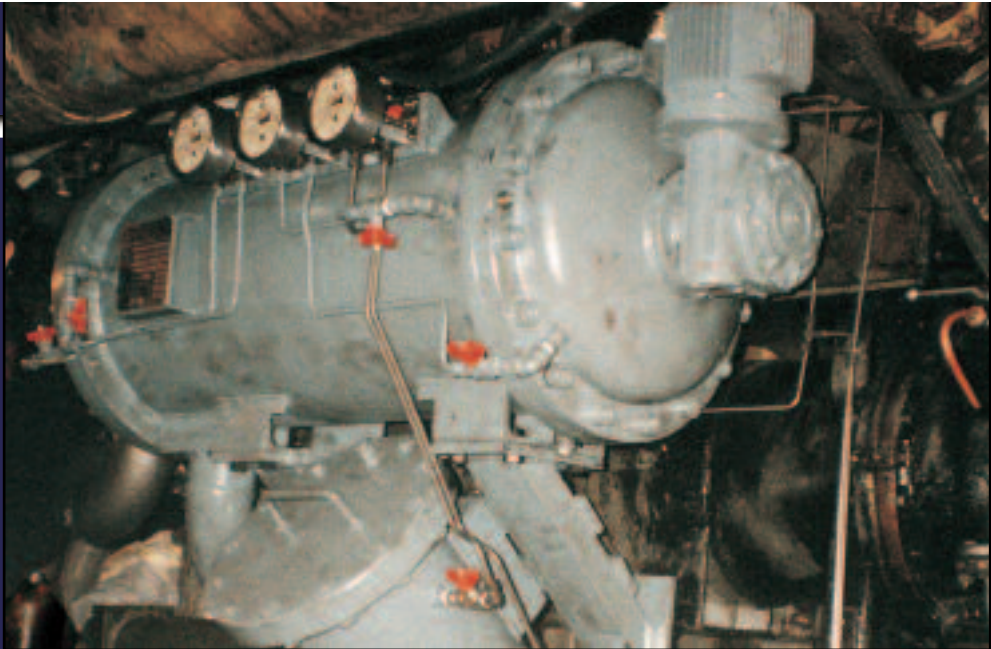
Notes: 1 - Only if requested

2 - Other sizes, materials and operating pressures are available



MICRONIC SELF-CLEANING FILTERS

The construction of these filters is very simple. The single filtering element is made of different sectors that are sequentially and individually cleaned by backwashing, while the ones in operation assure the regular filtration. The automatic cleaning does not require interruption of the process flow or any external power source. Their main use is for filtration of lube oil and fuel oil, for unattended operation, for highly contaminated fluids and especially where extreme filtration requirements call for safety leeway in case of improper maintenance.



ACXC filter
for lube oil on military diesel engine.



DACX+RM filter for lube oil,
diesel engines.



ACV filters for lube oil, built-on diesel engines.



ACP filter
for lube oil,
diesel engines.



ACX+RM filter
for lube oil,
diesel engines.



DACX and ACX+RM filters
for heavy fuel and lube oil,
diesel engines.



SELF-CLEANING LAMELLAR FILTERS

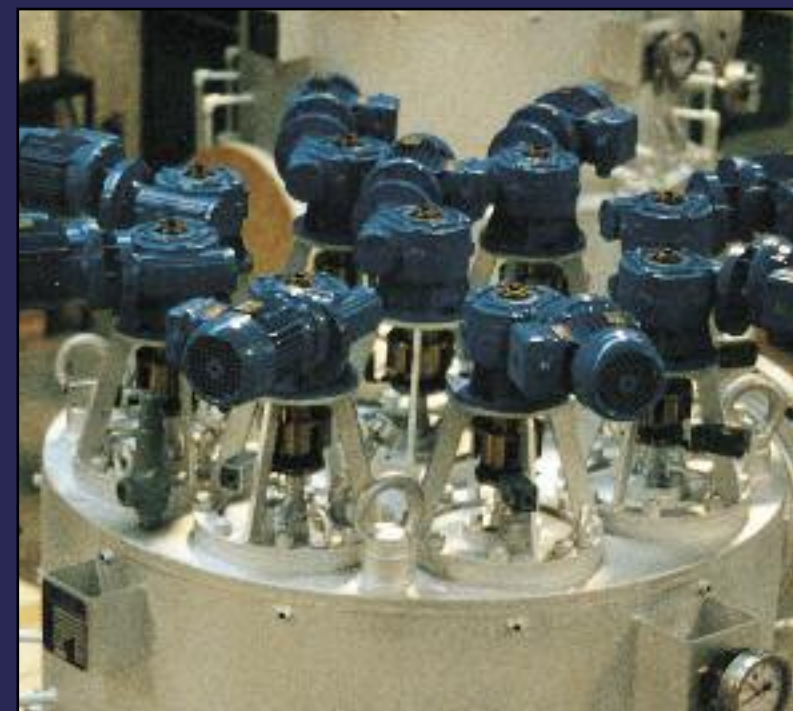
These filters are used for continuous service. The mechanical cleaning of the filtering elements is performed with an automatic or hand operated device without interrupting the process flow.

Type A motor operated duplex filters, with servo-assisted change-over valve.



Filtering elements

Type A
motor-operated
filter.





SKID MOUNTED FILTERING SYSTEMS

These filters are used for continuous service. The single filtering element is made of different sectors that are sequentially and individually cleaned by backwashing, while the ones in operation assure the regular filtration. Their main use is for filtration of highly contaminated fluids.



ACR feed filter for Hydrocracker Unit (VGO)
Bangkok, Thailand



ACW feed filter for HC reactor. Jamnagar, India.



ACR feed filter for CR-40 DAO
GOFINER Unit (Deasphalted Oil)
Priolo Gargallo, Italy

ACR feed filter for Hydrocracker
Unit (Blend of HCGO/HVGO)
Port Arthur, USA



ACW feed filter for MHC reactor. José, Venezuela.

ACR feed filter for DHDS unit
(Blend of VGO/LCO)
Mumbai, India





MULTI-BASKET BACKWASHING SELF-CLEANING FILTERS

These are used for continuous filtration of water and fluids with a high concentration of contaminants, including fibrous contaminants. The automatic cleaning by backflushing of the filtering elements does not require the interruption of the process flow.



AC filters for fire fighting systems, power generation.



AC filter for sea water, off-shore installation.



AC filters for cooling water, oil & gas.



AC filters for sea water,
desalination unit.



AC filters for fire fighting systems,
with by-pass valve, power generation.



AC filters for water, refinery.



Backwashing system - detail.



Filtering elements - wedge wire type.



BACKWASHING SELF-CLEANING DEBRIS FILTERS

These filters are used for continuous filtration of water and fluids with high concentration of contaminants, large flowrates and impurities. The automatic cleaning by backwashing of the filtering elements does not require the interruption of the process flow.



SACIL filter for sea water,
power generation cooling
systems.



SACIL FILTER for sea water. Sulcis, Italy.

AISI 316L stainless steel
SACIL filter for sea water.
Fusina, Italy.



SACIL FILTER for sea water.
Shuaiba, Kuwait.





DUPLEX FILTERS

These are two simplex filters connected by two 3-way change-over valves, allowing in-service cleaning of one filtering element without interrupting the process flow. Operation of the FILTREX valve is safe and easy, no special tooling is required, and it makes possible, if required, the simultaneous operation of the two simplex filters.



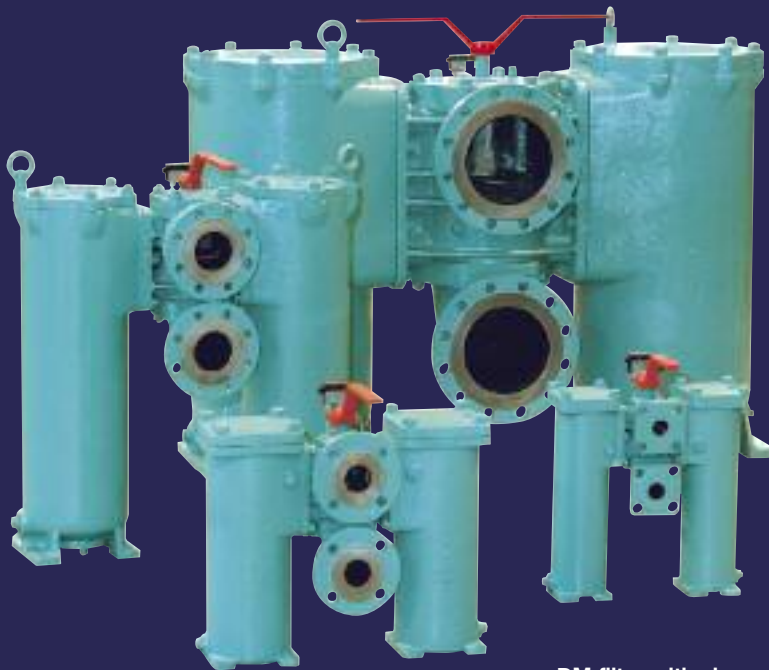
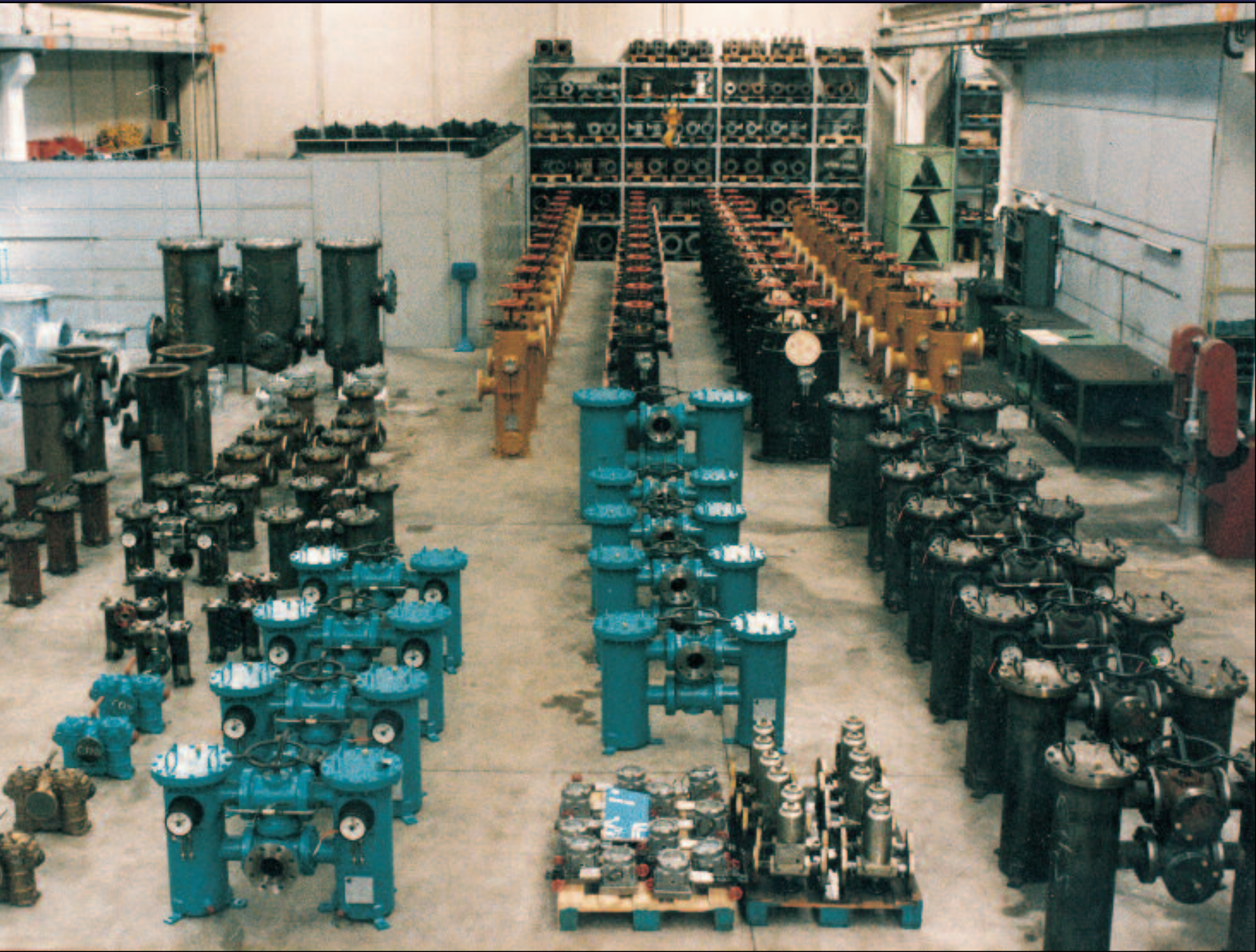
Change-over valve - detail.



DX filter with change-over pressure-seal valve.



DX filter with change-over pressure-seal valve.



DM filter with change-over plug valve.



DX filter with change-over pressure-seal valve.



SIMPLEX FILTERS

With their very simple construction and single filtering element, these filters combine trouble-free operation with ease of cleaning. They are used in on-off service.



C-clamp quick closure, detail.



SX filter for sea water.



Quick closure with swivel bolts, detail.



Duplex stainless steel SX filter for desalination plant.



SX filter rubber lined for sea water.



Design



Manufacturing



Testing



Shipping



Service

A complete in-house production cycle



FILTREX s.r.l.

CORPORATE HEADQUARTERS

Via R. Rubattino 94/B - 20134 Milano (ITALY) -

tel: +39 027 533 841- fax: +39 027 531 383 - www.filtrex.it - info@filtrex.it

NORTH AMERICA

FILTREX USA LLC
Virginia Beach, VA23455
USA

SOUTH AMERICA

FILTREX de VENEZUELA C.A.
8050 Puerto Ordaz - Estado Bolivar
VENEZUELA

INDIA

FILTREX systems INDIA Pvt. Ltd.
Mumbai 400 072,
INDIA

CHINA

FILTREX CHINA LLC.
Shanghai 200135,
P.R. CHINA

Agents worldwide

For details please contact our headquarters or visit www.filtrex.it